



**SCAL-100** quickly and easily performs Bump Test and calibrates SENSIT® P100 Monitors, stores data and manages instrument testing compliance.

For use with Black P100 Models Only.

MADE IN USA

**SENSIT**  
Technologies

For use with Black P100 Models Only.

# SCAL-100 CALIBRATION STATION

The **SCAL-100 Calibration Station** will automatically bump, calibrate, download and save calibration and bump test data of most **SENSIT® P100** Personal Monitors.

All calibration data, time, date, sensor and pump performance data is then stored in the calibrator for download to your computer. Data management software allows automatic uploading from calibrator, creates compliance reports and alerts selected personnel of overdue or failed calibrations.



## Design to Test/Calibrate SENSIT® P100 Monitors

- CO
- O2
- H2S
- HCN
- NO
- NO2
- Cl2
- SO2

## SCAL-100 Standard Features:

- Indicates proper gas pressure
- Automatic operation when instrument is installed
- Indication of pass or fail
- RJ45 intranet connection
- Wall or desk mount
- Compatible with Windows 7 and Windows XP Network

## SCAL-D or SCAL-N Reporting Features:

- Instrument Test Past Due
- Instrument Failure Alerts
- Monthly Compliance Report
- Sensor Performance Data
- Optional Networking System



## INDUSTRY USERS

Utilities  
Chemical / Petrochemical  
Fire Departments  
Safety Inspectors  
Home Inspectors  
Water/Sewer Departments  
Oil / Gas Production  
Utility Contractors  
Industrial Plants  
Propane Marketers

## APPLICATIONS

Simplify Calibration  
Simplify Compliance  
Simplify Instrument Tracking

## AVAILABLE TEST GASES\*

Carbon Monoxide - CO  
Hydrogen Cyanide - HCN  
Hydrogen Sulfide - H2S  
Oxygen - O2  
Sulfur Dioxide - SO2

\*Contact Sensit Technologies for more info.



**PRODUCT SPECIFICATIONS**

Size: 6" x 6" x 1.75" (15.24cm x 15.24cm x 4.5cm)  
 Weight: 2 lb. (0.9 kg)  
 Operational Temp: 40 – 120 F (5 to 50° C)  
 Max. Inlet Pressure: 20 PSI  
 Power: 100-240VAC 50/60Hz 0.2A input with 2VDC 0.5A output

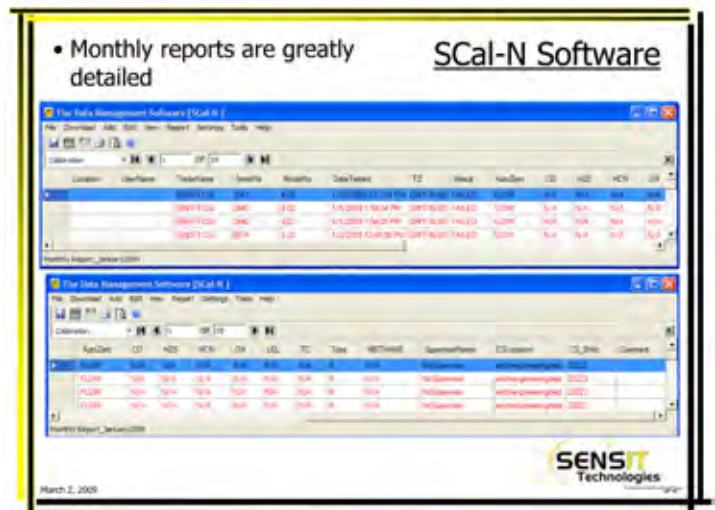
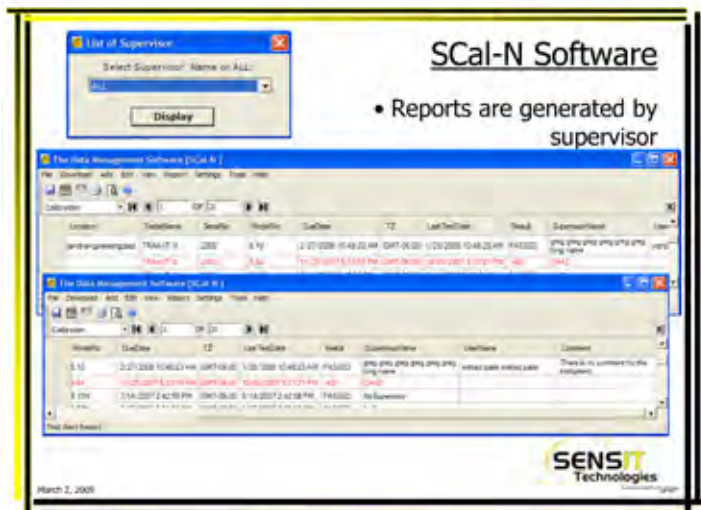
**SCAL-N REQUIREMENTS**

30MB Hard Drive Space  
 Windows® XP or Later Operating System  
 Microsoft® Outlook  
 Microsoft® Excel  
 Microsoft® SQL Server

# SCAL-N™

## SMART-CAL NETWORK CALIBRATION SYSTEM

SCAL-N™ is the Data Management Software used to download data from Smart-Cal Calibration Station(s) remotely located to be stored in SQL Server. Various reports and alerts can be viewed, printed, e-mailed or stored as an Excel spreadsheet. When configured, SCAL-N™ will automatically alert operators and supervisors of important data depending on their preference settings.



## SCAL-100 Gas Cylinders

34 liter 100ppm CO/Air  
Part # 315-100001

34 liter 25ppm H2S/Air  
Part # 315-100007

34 liter 10ppm HCN/Nitrogen  
Part # 315-100006

34 liter 5ppm Chlorine/bal N2  
Part # 315-100009

34 liter 25ppm Nitrous Oxide/bal N2  
Part # 315-100008

34 liter 10ppm Nitrogen Dioxide/bal N2  
Part # 315-100005

34 liter 10ppm Sulfur Dioxide/bal Air  
Part # 315-100002

## NEW INSTRUMENTS

### SENSIT® GOLD G2 GAS DETECTION INSTRUMENT

SENSIT® GOLD G2 is the most versatile and user-friendly SENSIT instrument available.

Displays Up To 4 Gases Simultaneously

- LEL (%Volume and PPM Optional)
- Oxygen
- Carbon Monoxide
- Hydrogen Sulfide
- Hydrogen Cyanide (Optionally)



### Trak-It® IIIa

#### COMBUSTIBLE GAS INDICATOR

TRAK-IT® IIIa displays up to 4 gases and can be configured for combustible gas readings in PPM, LEL and/or percent volume as well as a variety of toxic sensors and oxygen.



### SENSIT® PMD

#### PORTABLE METHANE DETECTOR

SENSIT® PMD performs methane gas leak surveys fast, accurately and at the lowest operation cost.



### SENSIT® P100

#### PERSONAL MONITOR

SENSIT® P100 is a single gas personal monitor designed to warn the user of hazardous gases in their working environment.



MADE IN USA

Distributed by:



Ex-Ox-Tox Gasdetectie  
Westerdreef 5V  
2152 CS Nieuw-Venep  
Telefoon: 0252 620885  
E-mail: [info@exotox.nl](mailto:info@exotox.nl)  
Website: [www.exotox.nl](http://www.exotox.nl)